

TAPPED IN

Bringing you news, updates and information from Watercare

Summer 2026

Latest news



Be in to
WIN

Follow
us on our
socials and
be in to win
a summer
giveaway



@watercarenz



@watercare_nz



@watercare_nz

Rain or shine, keep loving every drop

This summer has already reminded us of something very Auckland: you can get a run of sunshine one week, then a downpour the next. But whatever the forecast brings, the way we use water at home still matters because it helps protect Auckland's water supply, our wastewater network, and the environment we all share. And the bonus? Simple waterwise habits help keep your water bill down, especially in summer when household water use often climbs.

The good news is that, from a water supply perspective, we came into summer in a strong position. After a very wet winter in 2025, Auckland's total dam storage reached 100 per cent in July and stayed close to full through spring and early summer. We started the new year with storage sitting at around 97 per cent — well placed heading into the warmest months.

Even so, using water wisely still makes a real difference. That's because demand can spike quickly on really warm days, when more of us are watering gardens and taking extra showers to cool off. On peak days,

Auckland can use up to 100 million litres more water than usual — that's about 40 Olympic-sized swimming pools.

Whatever this summer brings — rain, shine, or both in one day — it's a great time to keep waterwise habits going at home while our team keeps doing our part to deliver safe, reliable services for Auckland.

Together, we can protect an essential resource that benefits both our families and communities — today and for the future. When it comes to water, every drop counts.

From our socials: Aucklanders share their best waterwise home habits

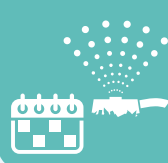
Take shorter
showers
- less than
4 minutes



Collect and
reuse water
(shower,
dehumidifier,
rinsing dishes)
where you can



Water your
garden every
other day, and
at dawn or dusk



Check your
home for
leaks



Reuse fish tank
water for house
plants and
citrus trees



Use a
low-flow
showerhead



Visit our
[campaign page](#)
to learn more.

What's happening across Auckland

Our teams are out across Tāmaki Makaurau delivering Watercare's \$13.8 billion, 10-year infrastructure programme — building resilience, boosting capacity and supporting our growing city. With 110 projects underway across the region, there's a lot happening. To give you an idea, here's a snapshot of five projects.

North



Waiwera and Hatfields Beach

We're delivering a \$45 million programme to replace and upgrade critical water and wastewater infrastructure in Waiwera. This work includes constructing a new wastewater pump station, a wastewater pipeline and a new watermain.

Crews are currently installing sections of the 4.5 km wastewater pipeline along Hibiscus Coast Highway and Weranui Road. Early works for the new Waiwera Pump Station, located at the Waiwera Wastewater Treatment Plant, begin in February 2026.

The programme is on track for completion in December 2026.



Central



Ōwairaka, Wesley and Mt Roskill

By late 2026, all three projects in our \$95 million programme to upgrade water services in Mt Roskill and nearby suburbs will be up and running. Together, the Akarana Booster Pump Station, the Waikōwhai Pipeline, and the Ōwairaka and Wesley watermain upgrades will cater for growth and strengthen network resilience.

Crews are currently completing watermain upgrades on Denney Avenue and May Road, and commissioning of the Akarana Booster Pump Station is now underway.

Commissioning of the new pipelines and watermain is scheduled to begin in March 2026.



West



Titirangi, Glen Eden and Laingholm

We're upgrading sections of the Nihotupu 1 pipeline, which supplies water to around 18,000 homes in west Auckland. The original cast iron line, laid in the early 1900s, is being renewed to improve reliability.

From February, crews are replacing sections along Withers Road, Kashmir Road and Nandana Drive. We are also replacing watermain in the area to avoid future disruptions.

The Nihotupu watermain upgrade is expected to be completed by July 2026.



South



Clarks Beach and Waiuku

We're bringing an upgraded wastewater treatment plant and a new outfall into service at Clarks Beach — the first major milestone in our \$500 million-plus Southwest Wastewater Programme.

Once online, the plant will treat up to five million litres of wastewater per day to a high standard, with the outfall dispersing treated water around 100 metres into the Waiuku Channel.

We're also installing a new tidal storage system at the outfall and putting the final touches on the next projects in the programme.

The upgraded plant and outfall are scheduled to come into service in June 2026.



East



Beachlands and Maraetai

We've completed the renewal of 6.2 kilometres of wastewater pipes in Beachlands and Maraetai as part of a \$12 million citywide programme to strengthen Auckland's wastewater network.

Over the past nine months, our crews have assessed the condition of the network, relined 6.2 kilometres of wastewater pipes, rehabilitated 85 manholes and 198 household connections.

As part of this wider programme, we're also carrying out investigations and renewals in Newmarket, along with pipeline CCTV investigations across west Auckland, which are expected to wrap up by the end of February 2026.



Key benefits



Build resilience



Protect environment



Cater for growth



Improve treatment process

In focus

Join us at Waikato WTP

Join us for a free, guided 2-hour tour of the Waikato Water Treatment Plant in Tuakau.

Discover the fascinating journey of water treatment at our Waikato plant, which provides approximately 20 per cent of Auckland's drinking water.



Date: Sunday 22 March 2026 – World Water Day

Time: Tours run between 10am to 3pm, with each tour taking about two hours, starting at different times of the day

Bookings: There is no cost for the tours, but you must book a ticket to gain entry on the day

Minimum age: 8 years old

Book your spot [here](#).

Highlights of the tour:

- Go on a guided tour with our water technicians to see how we treat and purify water drawn from the Waikato River.
- Visit our Wonder Wai Discovery Centre.
- Enjoy a free sausage sizzle and ice cream after completing your tour.

What's in your backyard?

Easy walks, fresh air and local views – right on your doorstep

With water and wastewater infrastructure woven throughout Tāmaki Makaurau, some of Auckland's most underrated walking tracks sit closer to home than you might think. From gentle strolls to slightly more energetic outings, these accessible, free walks offer a great way to explore the places that quietly support our city – no long drives or extensive planning required.

Whether you've got an hour to spare or a full day to enjoy, here are a few ideas to get you started. Before departing please check if tracks are open or closed on www.aucklandcouncil.govt.nz

If you're looking for a hands-on experience that brings Auckland's water journey to life, visit Wonder Wai which pops-up at events throughout the city – for more info visit watercare.co.nz

| | Watercare Coastal Walkway (Māngere) | Hūnua Ranges | | | | Waitākere Ranges | |
|---------------|--|---|--|---|---|---|------------------------------------|
| | | Hays Creek Falls Lookout | Hūnua Falls Walk | Cossey–Massey Loop | Wairoa Loop Track | Beveridge to Arataki Track | Upper Nihotupu Reservoir walk |
| | 7 km return (Ambury Regional Park to Otuataua Stonefields) | 100m return | 0.8 km return | 8.3 km loop | 6.6 km loop | 3.5 km return | 6.5 km return |
| | 3 hours | 1 minute | 15 minutes | 3 hours | 3 hours | 1–1.5 hours | 2 hours |
| | Relatively flat, shared path | Gentle, flat | Short, easy | Steep in places | Moderate, well maintained trail | Moderate to challenging walking tracks | Moderate |
| Good to know: | Check out Ambury Farm, a working farm open to the public | This is a stop-off, not much walking required | Bring your camera – this is one of Auckland's iconic photo spots | Expect impressive views and beautiful native bush | A mix of flat sections, steep stairs and impressive views | Features dramatic coastlines and lush native bush | A gentle hike without major climbs |

In the know

Day in the life of hydrologist Sarah Innes

Spending time in nature and ensuring our taps flow reliably with safe drinking water are two reasons why Sarah loves working for Watercare.



A big part of Sarah's role is deciding how much water we take from each of our water sources every week, by looking at the amount of water available and what's happening in the wider supply network. She visits our water supply dams, rainfall gauges and stream flow monitoring sites across Auckland to get a view of where the rain is falling and in what quantities.

But it's not just about today's water supply. Sarah and her team also look out into the future. They create long-term records for climate change assessments to understand trends. The data she collects feeds into water resources modelling.

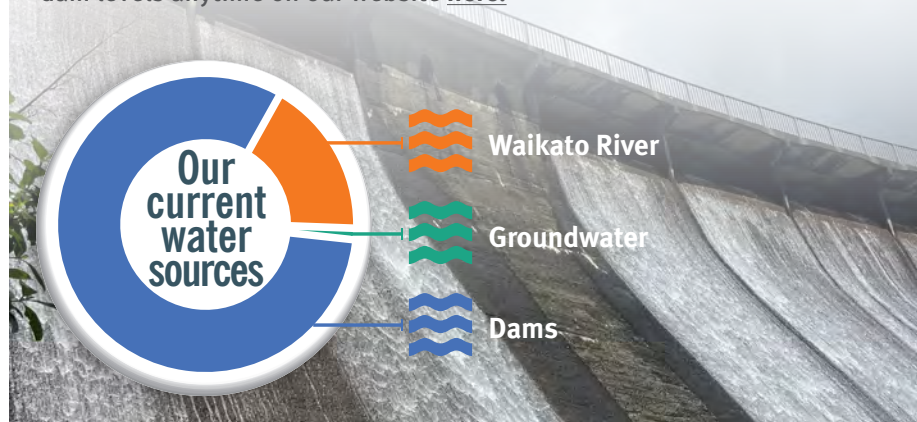
"We look at supply and demand, how much water we have available, what our peak summer demand is and what things could potentially impact a reliable water supply in the future."

Originally from New Plymouth, Sarah moved to Auckland to study civil and environmental engineering at Auckland University. Water captured Sarah's interest early on – "I did a bit of geotechnical work, but I realised I wasn't that interested in rocks. Water is much more interesting."

To read more about Sarah's role, visit watercare.co.nz/careers.

Snapshot: How full are the dams?

Most of Auckland's drinking water comes from 10 dams in the Hūnua and Waitākere ranges. You can check live dam levels anytime on our website [here](#).



Everydropcounts

How to check for leaks

If you have a leak and it's left unfixed, it can quickly add up, leading to a higher water bill and even water damage around your home.

If you think you might have a leak, the first step is to track down where it's coming from. Here are a few places to start your search:



Dripping taps: Will a tap not turn off?



Behind dishwasher/washing machine: Are there any signs of water?



Toilet leaks: Add a few drops of food colouring to the cistern and wait 10 minutes. If colour appears in the bowl without flushing, you've likely got a leak.



Water meter: Take a meter reading, stop all water use for 2–4 hours, then recheck. If the reading changes, you may have a leak.



Outside: In dry weather, do you see damp patches in the garden, lawn or driveway?

Listen carefully throughout your checks. Can you still hear running water when no taps, hoses or showers are going?

Discover our step-by-step leak-check guide [here](#).

KEEP IN TOUCH

Connect with us by contacting our communications team at www.watercare.co.nz/home/contact-us

You can learn more about what we do [here](#).