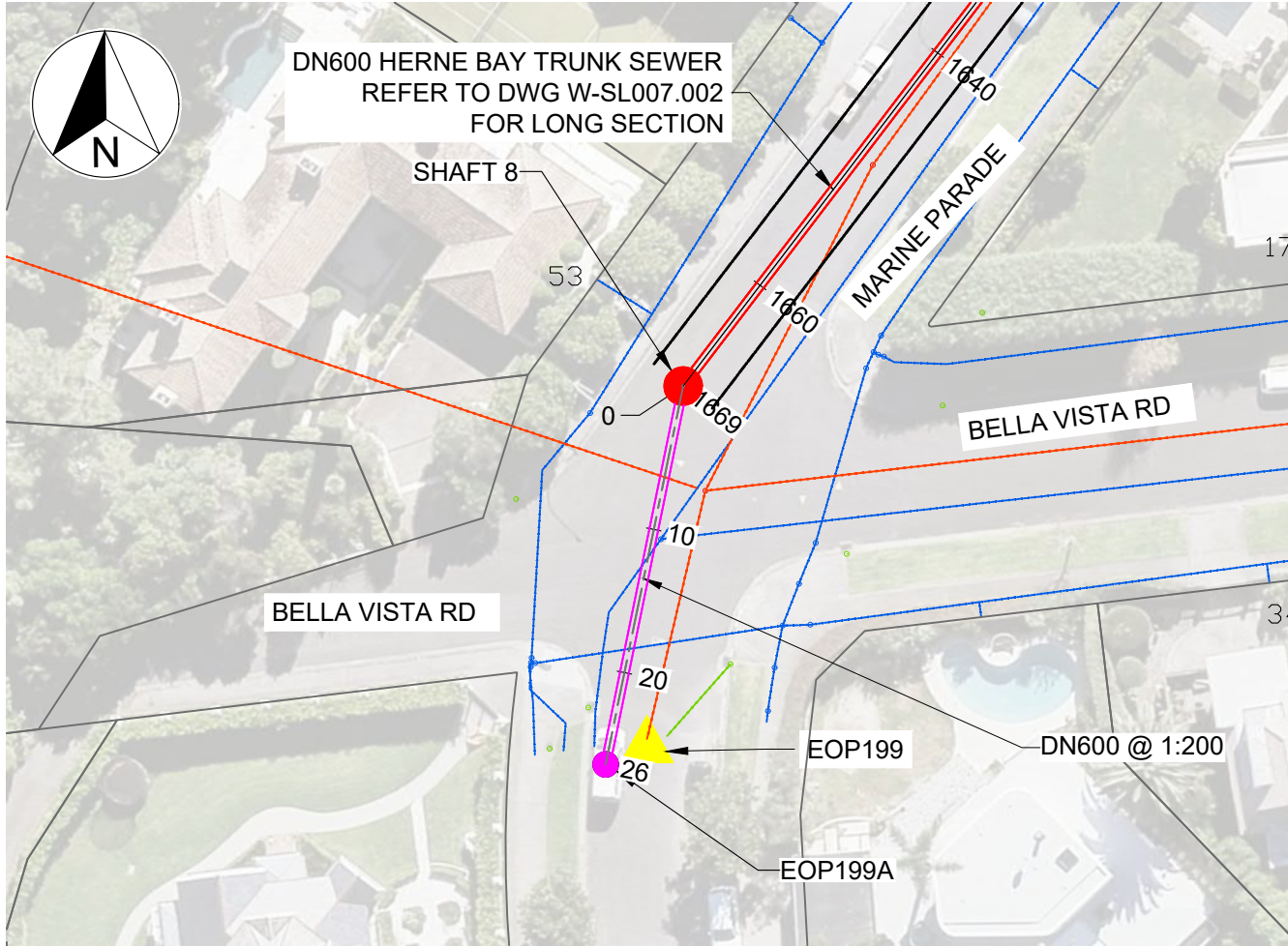
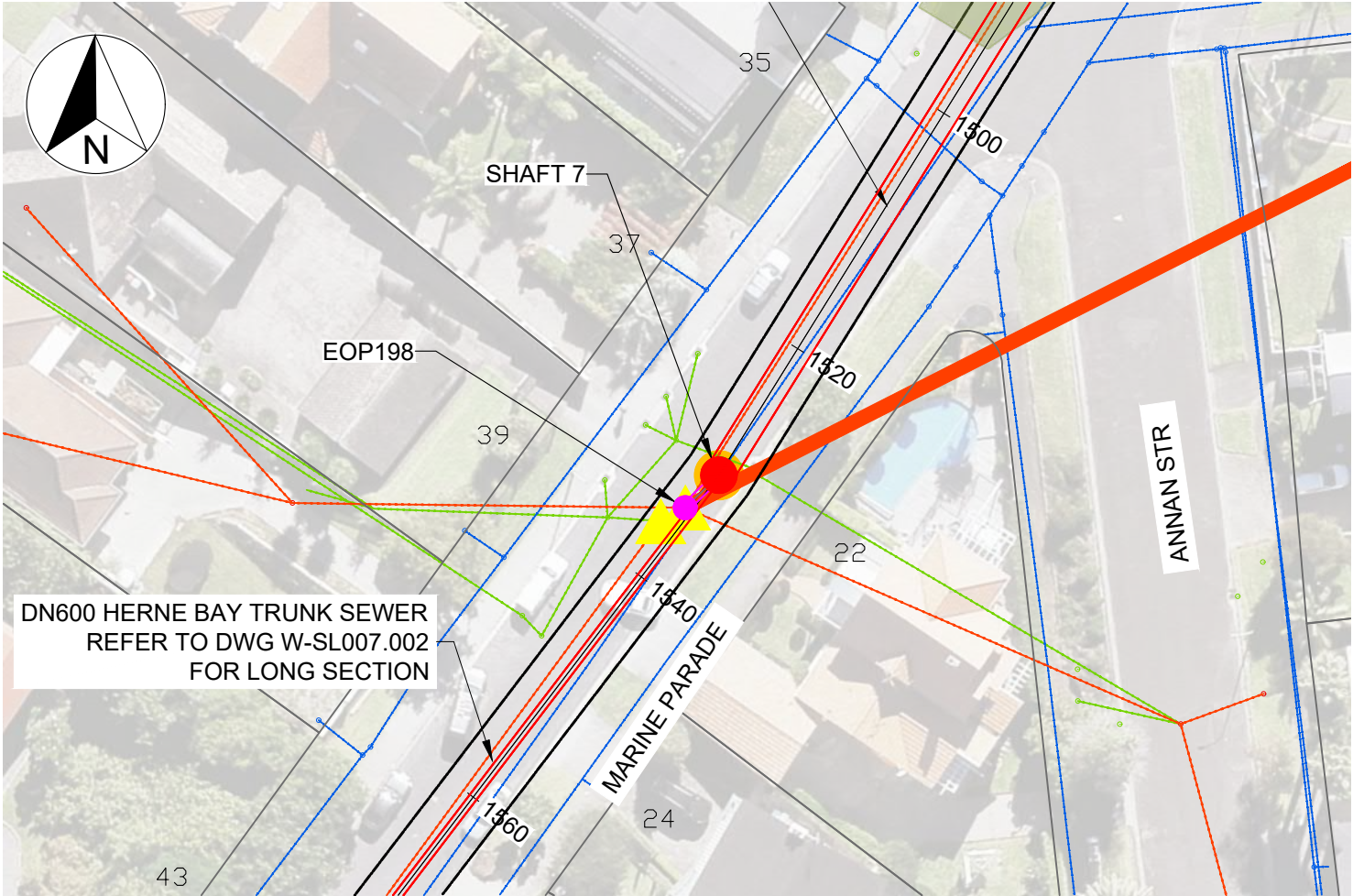


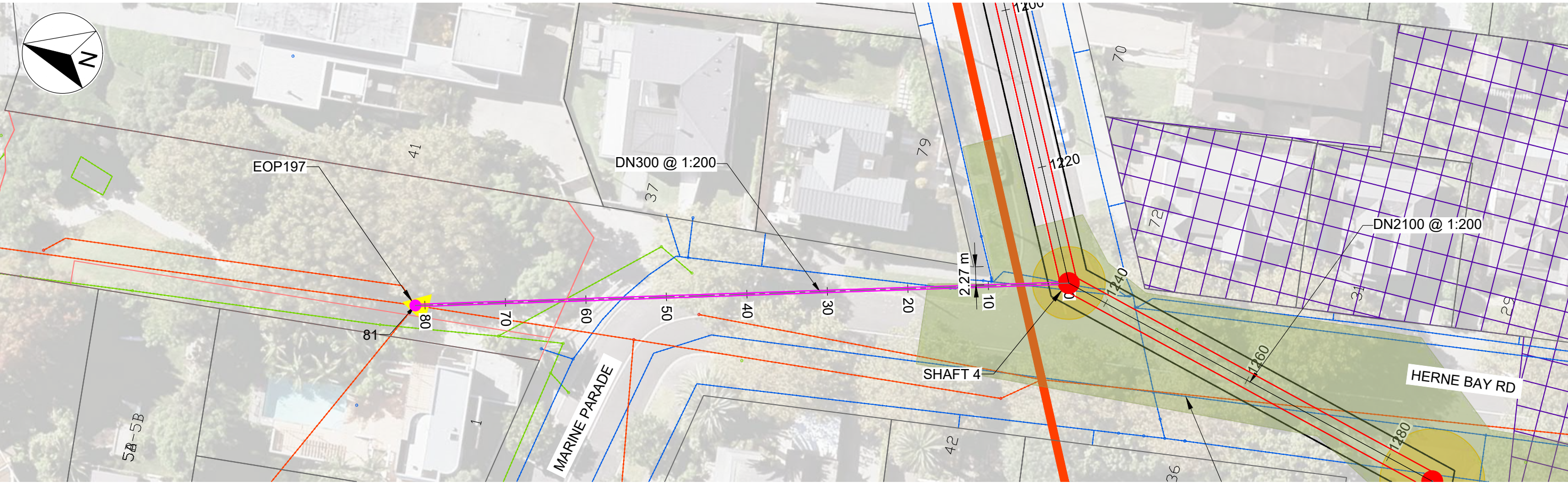
PIPE SIZE OF EOP CONNECTIONS ARE TBC.  
EOP LONG SECTIONS ARE IN RELATION TO OPTION 2 (MINIMUM DEPTH)



PLAN - EOP 199 - SHAFT 8  
SCALE 1:500 @ A1



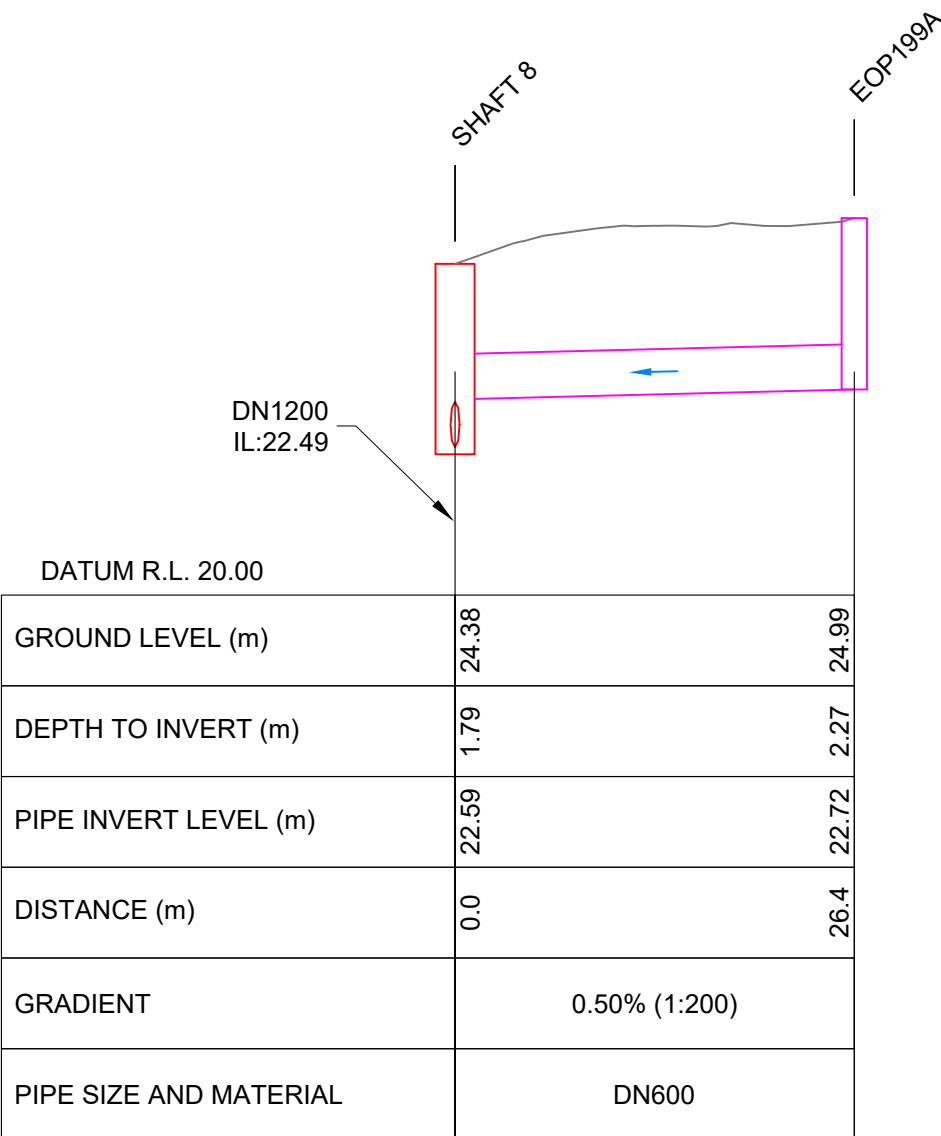
PLAN - EOP 198 - SHAFT 7  
SCALE 1:500 @ A1



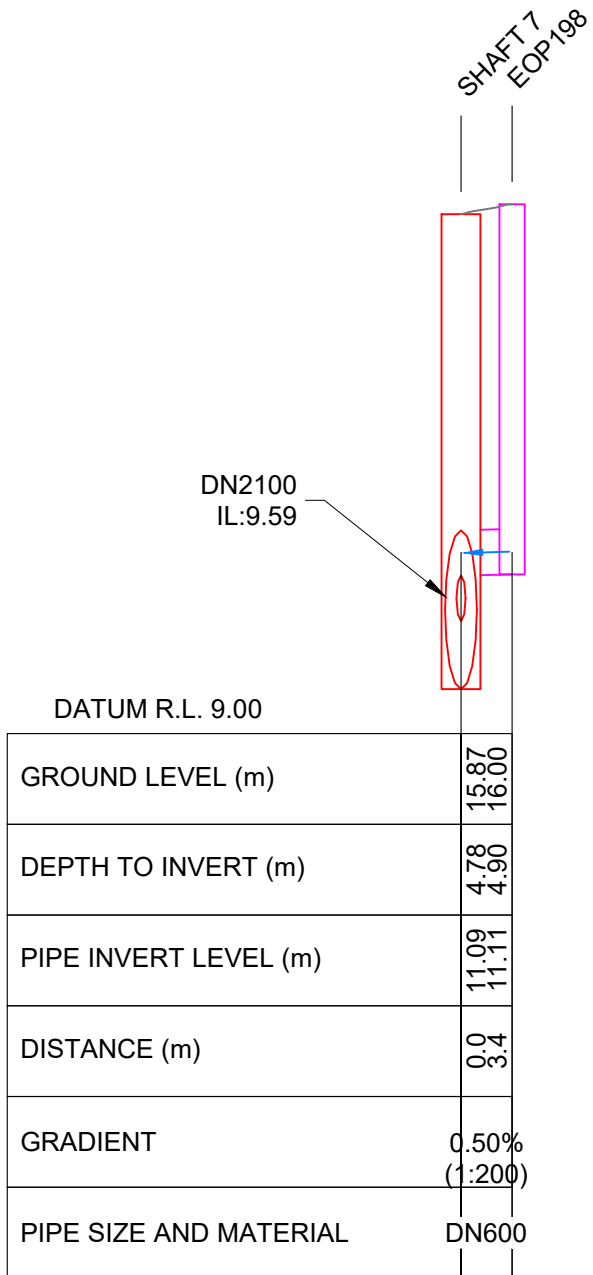
PLAN - EOP 197 - SHAFT 4

SCALE 1:500 @ A1

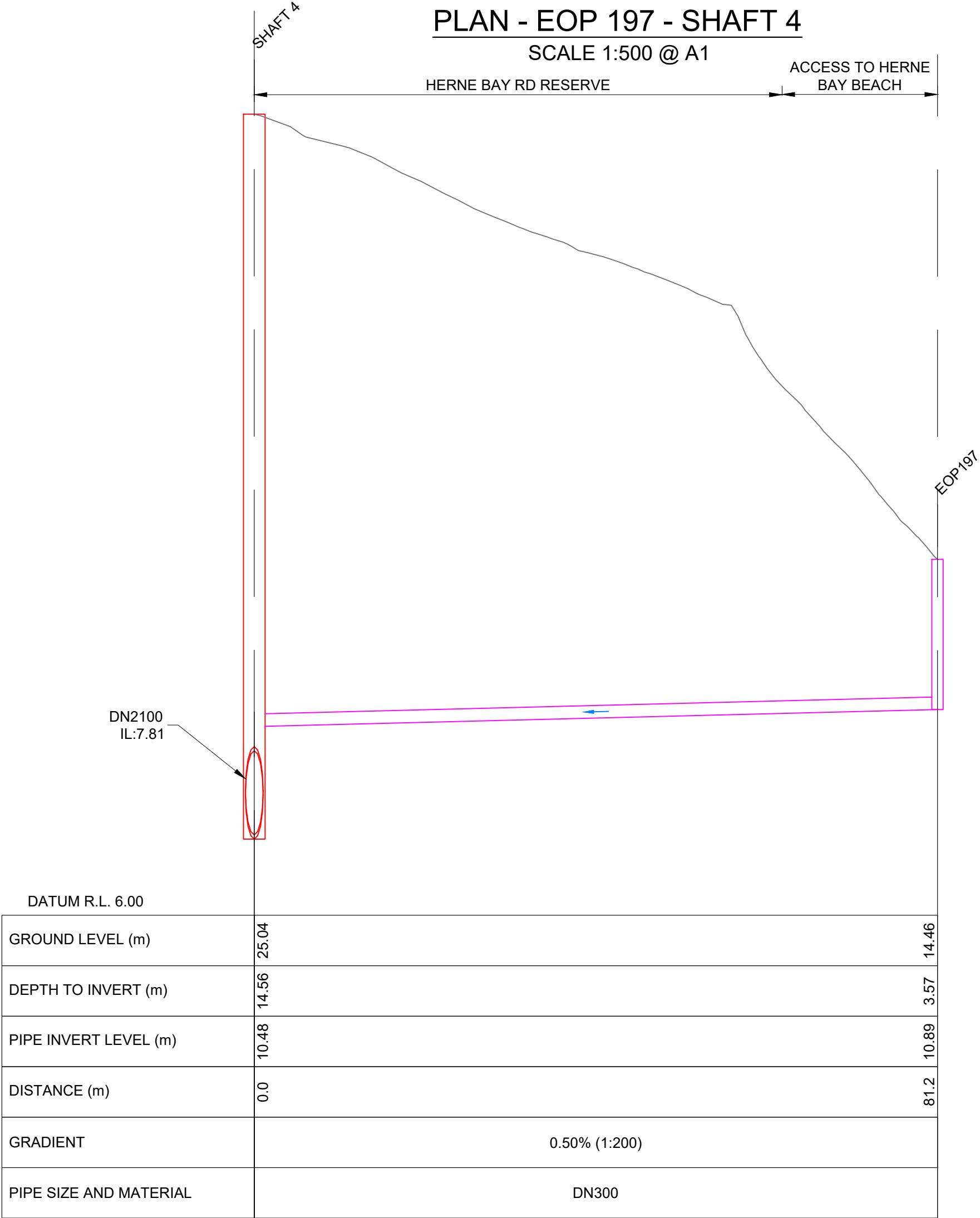
HERNE BAY RD RESERVE ACCESS TO HERNE BAY BEACH



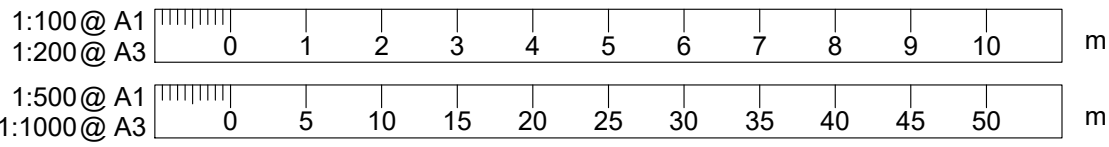
LONGITUDINAL SECTION  
EOP 199 - SHAFT 8  
SCALE 1:500H 1:100V @ A1



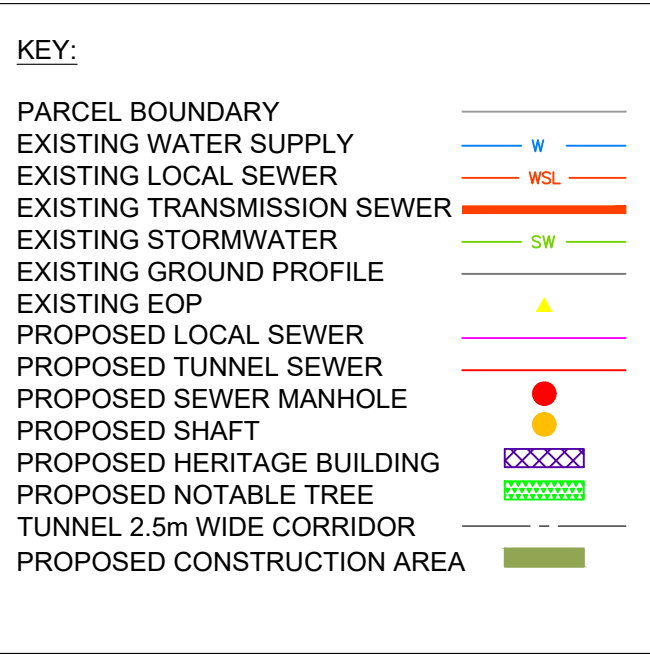
LONGITUDINAL SECTION  
EOP 198 - SHAFT 7  
SCALE 1:500H 1:100V @ A1



LONGITUDINAL SECTION  
EOP 197 - SHAFT 4  
SCALE 1:500H 1:100V @ A1



- NOTES:
- REFER TO SHEET W-SL007.002 FOR PROPOSED TRUNK SEWER LONG SECTION
  - COORDINATES ARE IN TERMS OF NEW ZEALAND TRANSVERSE MERCATOR 2000 CIRCUIT.
  - LEVELS ARE IN TERMS OF METRES AUCKLAND 1946 LOCAL VERTICAL DATUM.
  - DIMENSIONS / DISTANCE ARE IN METRES UNLESS STATED OTHERWISE.
  - IT IS THE CONTRACTORS RESPONSIBILITY TO LOCATE ALL EXISTING SERVICES PRIOR TO CONSTRUCTION.
  - DESIGN AT CONCEPT STAGE AND SUBJECT TO CHANGE THROUGH DESIGN PROCESS.
  - NO SURVEY OF THE EXISTING UTILITIES AND FEATURES HAVE BEEN CARRIED OUT.
  - TUNNEL ALIGNMENT SHOWN WITH 2.5m WIDE CORRIDOR EITHER SIDE OF PROPOSED ALIGNMENT.



				DESIGNED	G.I.P	06-23
				DES. APPROVED	C.STOKES	06-23
				DRAWN	G.I.P	06-23
				DWG. APPROVED	M.KUDOIC	06-23
2	20.06.23	FINAL ISSUED FOR CONSENT APPLICATION	GI	WSL DESIGN MGMT	B.DEVILLIERS	-
1	16.02.23	DRAFT ISSUED FOR CONSENT APPLICATION	GI	WSL PROJ. LEAD	-	-
ISSUE	DATE	AMENDMENT	BY	APPD.	BY	DATE



HERNE BAY TRUNK SEWER UPGRADE  
MARINE PARADE TO PT ERIN  
LONGITUDINAL SECTIONS - LOCAL NETWORK SHEET 1

CAD FILE	W-SL007.003	DATE	20-06-23
ORIGINAL SCALE	A1 1:500	CONTRACT No.	1
REF. No.	W-SL007.01		
DWG. No.	W-SL007.003	ISSUE	2