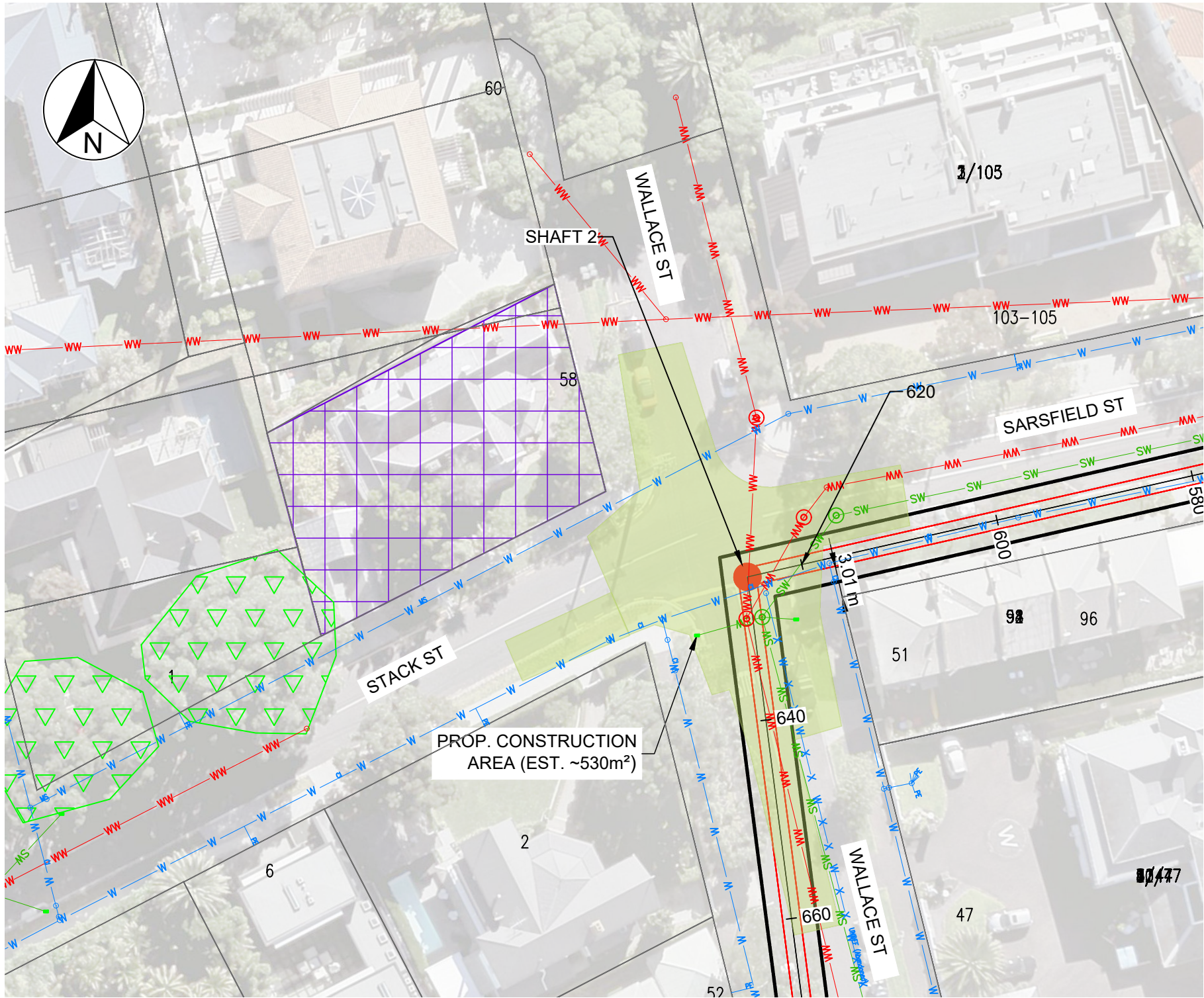
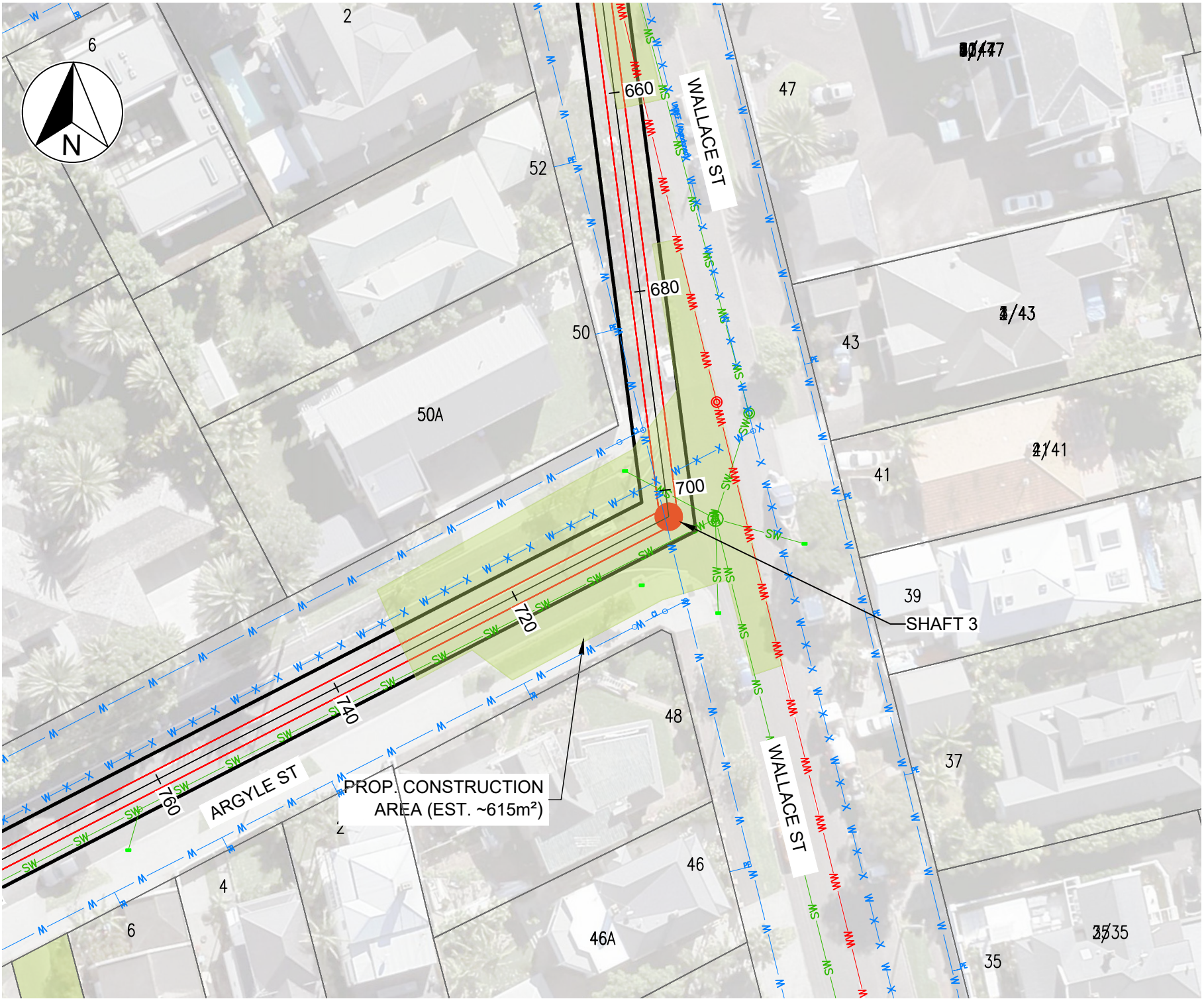


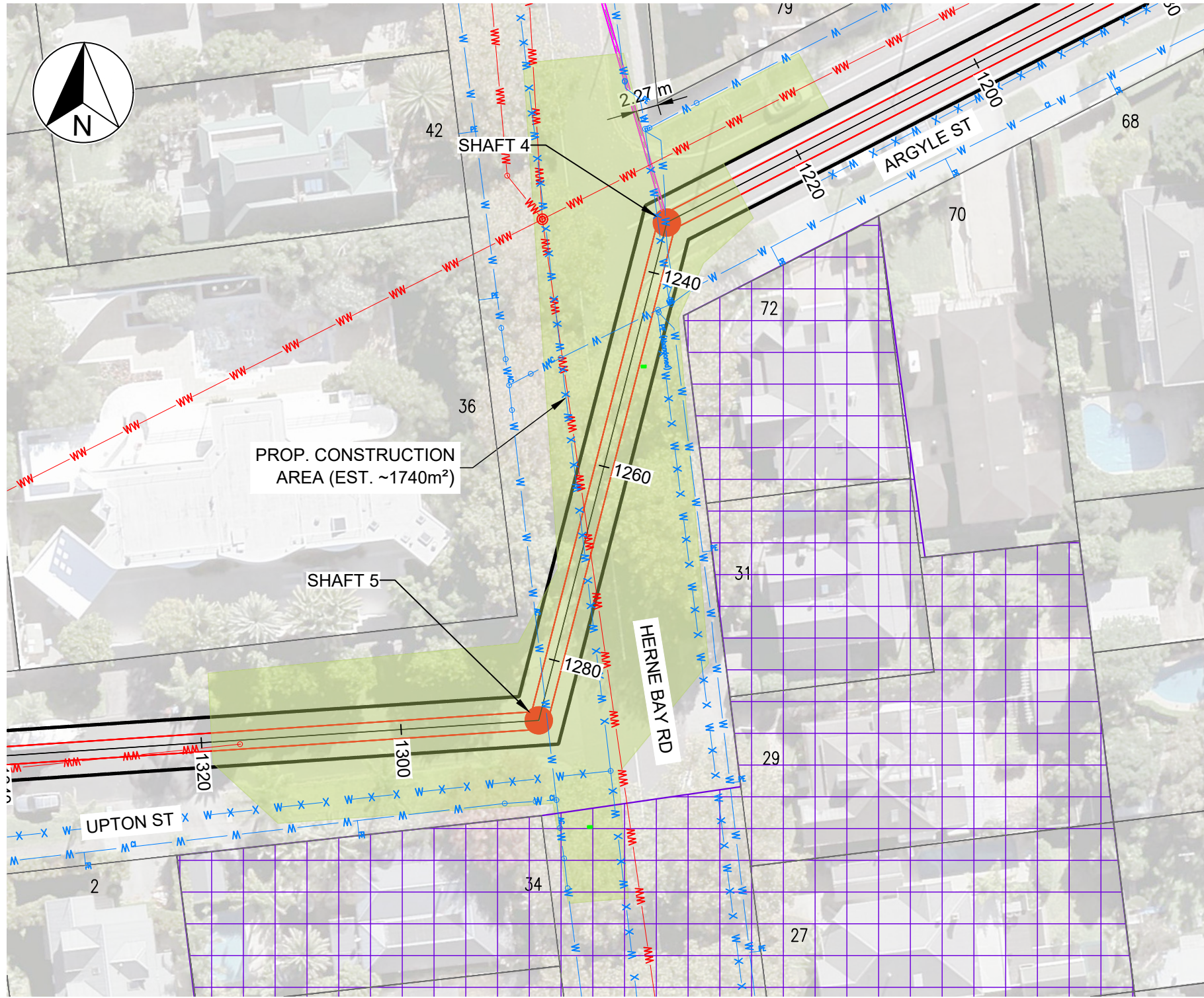
SHAFT 1 LOCATION  
SCALE 1:500 @ A1



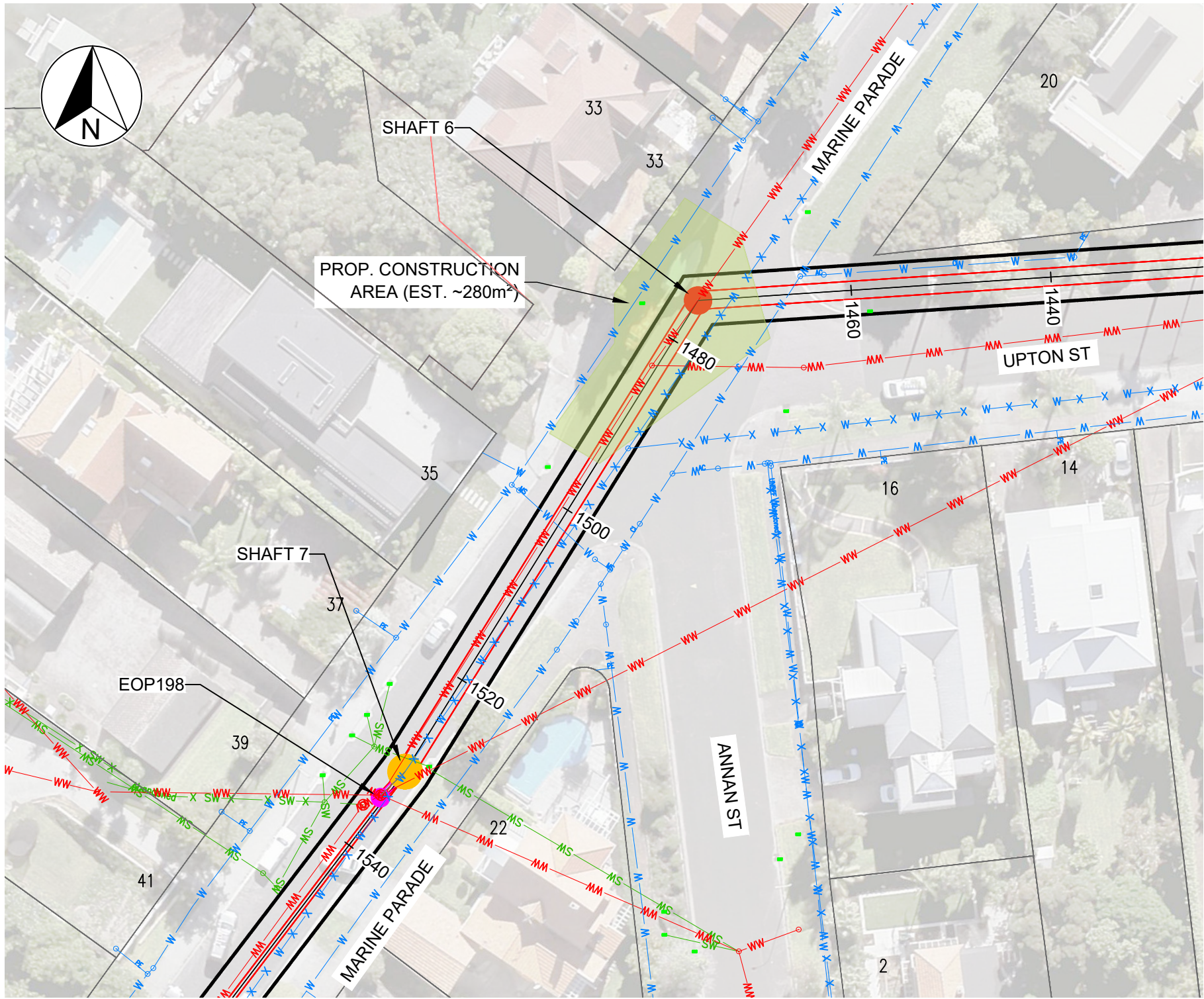
SHAFT 2 LOCATION  
SCALE 1:500 @ A1



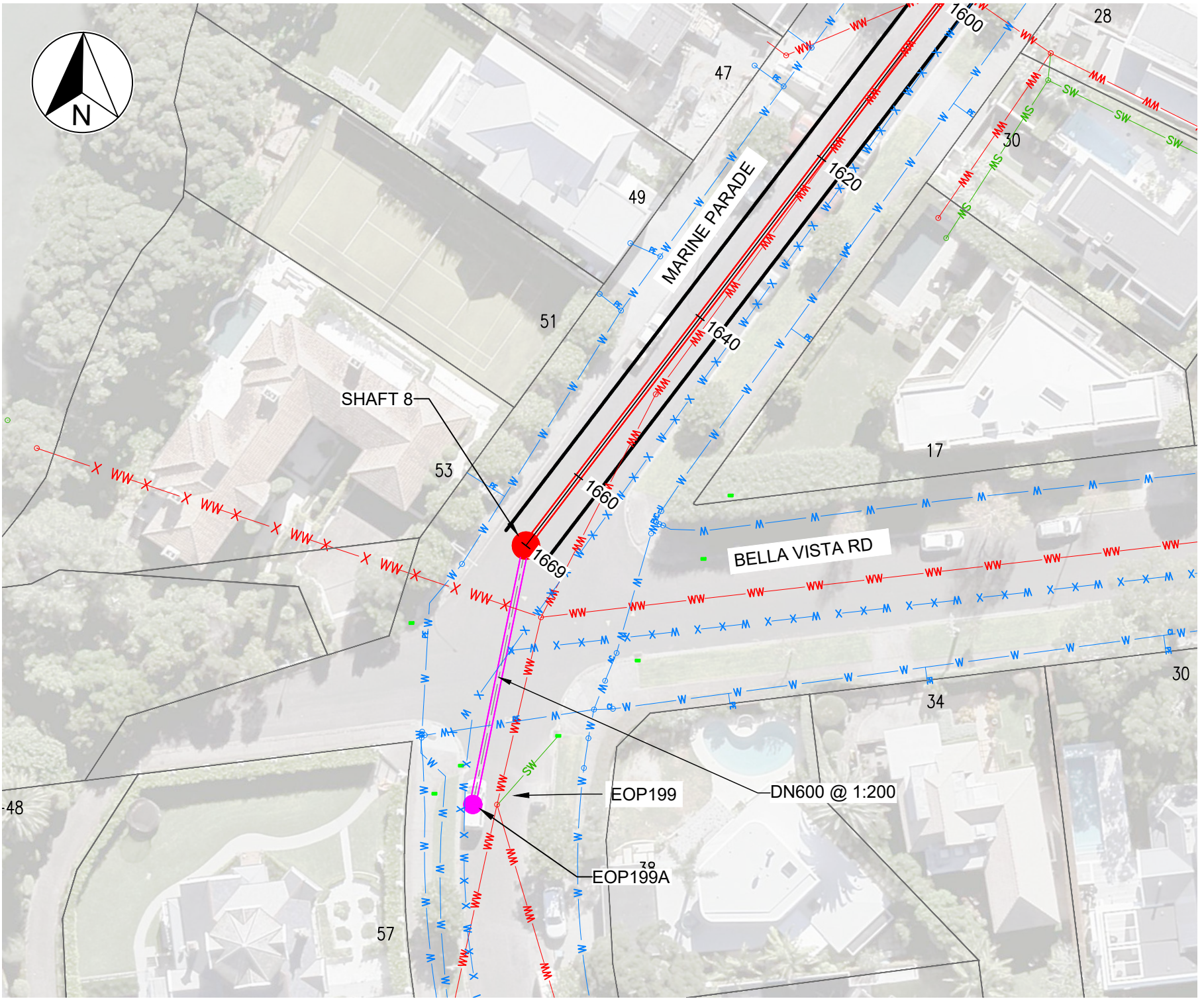
SHAFT 3 LOCATION  
SCALE 1:500 @ A1



SHAFT 4 & 5 LOCATION  
SCALE 1:500 @ A1



SHAFT 6 & 7 LOCATION  
SCALE 1:500 @ A1



SHAFT 8 LOCATION  
SCALE 1:500 @ A1

NOTES:

1. REFER TO SHEET W-SL007.002 FOR PROPOSED TRUNK SEWER LONG SECTION
2. COORDINATES ARE IN TERMS OF NEW ZEALAND TRANSVERSE MERCATOR 2000 CIRCUIT.
3. LEVELS ARE IN TERMS OF METRES AUCKLAND 1946 LOCAL VERTICAL DATUM.
4. DIMENSIONS / DISTANCE ARE IN METRES UNLESS STATED OTHERWISE.
5. IT IS THE CONTRACTORS RESPONSIBILITY TO LOCATE ALL EXISTING SERVICES PRIOR TO CONSTRUCTION.
6. DESIGN AT CONCEPT STAGE AND SUBJECT TO CHANGE THROUGH DESIGN PROCESS.
7. NO SURVEY OF THE EXISTING UTILITIES AND FEATURES HAVE BEEN CARRIED OUT.
8. TUNNEL ALIGNMENT SHOWN WITH 2.5m WIDE CORRIDOR EITHER SIDE OF PROPOSED ALIGNMENT.

1:500 @ A1  
1:1000 @ A3

KEY:	
PARCEL BOUNDARY	
EXISTING WATER SUPPLY	
EXISTING LOCAL SEWER	
EXISTING TRANSMISSION SEWER	
EXISTING STORMWATER	
EXISTING GROUND PROFILE	
EXISTING EOP	
PROPOSED LOCAL SEWER	
PROPOSED TUNNEL SEWER	
PROPOSED SEWER MANHOLE	
PROPOSED SHAFT	
PROPOSED HERITAGE BUILDING	
PROPOSED NOTABLE TREE	
TUNNEL 2.5m WIDE CORRIDOR	
PROPOSED CONSTRUCTION AREA	

				DESIGNED	F. FAROOK	10-23
				DES. APPROVED	C. STOKES	10-23
				DRAWN	F. FAROOK	10-23
3	17.10.23	UPDATED ISSUE FOR CONSENT APPLICATION	F.F.	M.K.	DWG. APPROVED	M. KUDOIC
2	20.06.23	FINAL ISSUED FOR CONSENT APPLICATION	GI	MK	WSL DESIGN MGMT.	C. HEMI
1	16.02.23	DRAFT ISSUED FOR CONSENT APPLICATION	GI	MK	WSL PROJ. LEAD	-
ISSUE	DATE	AMENDMENT	BY	APPD.	BY	DATE

**Watercare**

COPYRIGHT — This drawing, the design concept, remain the exclusive property of Watercare Services Limited and may not be used without approval. Copyright reserved.

HERNE BAY TRUNK SEWER UPGRADE  
HAMILTON ROAD, HERNE BAY  
CONSTRUCTION PLAN – TUNNEL SHAFT LOCATIONS

CAD FILE	W-SL007.007	DATE	17-10-23
ORIGINAL SCALE	A1	CONTRACT No.	1
REF. No.	W-SL007.01		
DWG. No.	W-SL007.007	ISSUE	3